

Need to save some space?

Kinnarps

ERICSSON
RACING TEAM

official supplier

Kinnarps

Bild ej levererad från Ericsson

Efficient office space replanning



How space planning is normally done.

Different types of works done by people require different type of w/s:

UK Example

There are solutions for 12, 10, 8 and 6 sq.m. per person.

Calculations

Conclusion



When we start planning
your new office we analyze
your existing office
divided into four areas

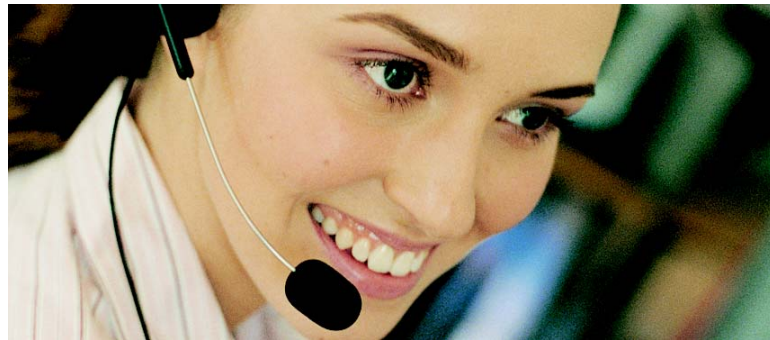
- premises
- technology
- organisation
- individuals



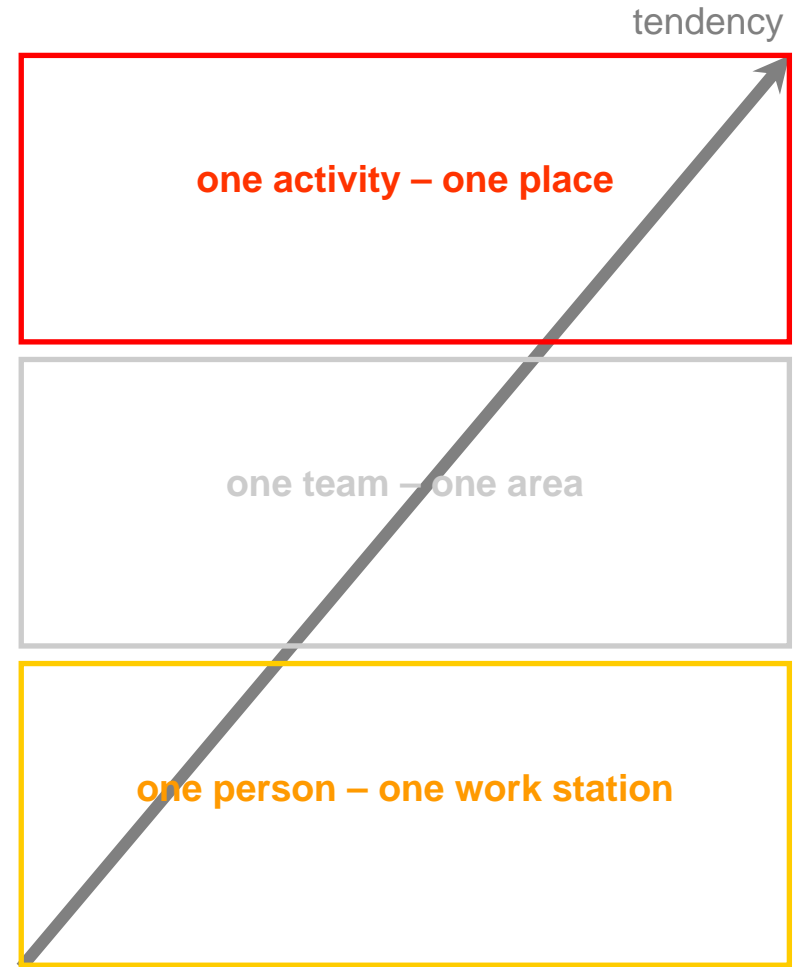
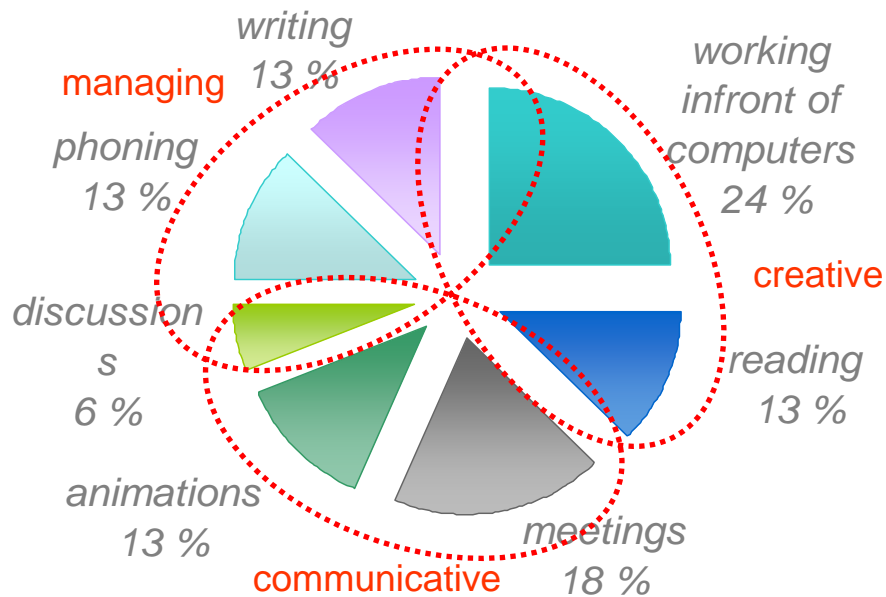
Individuals

our tasks today

- creative
- managing
- communicative



different tasks put varying
needs on offices





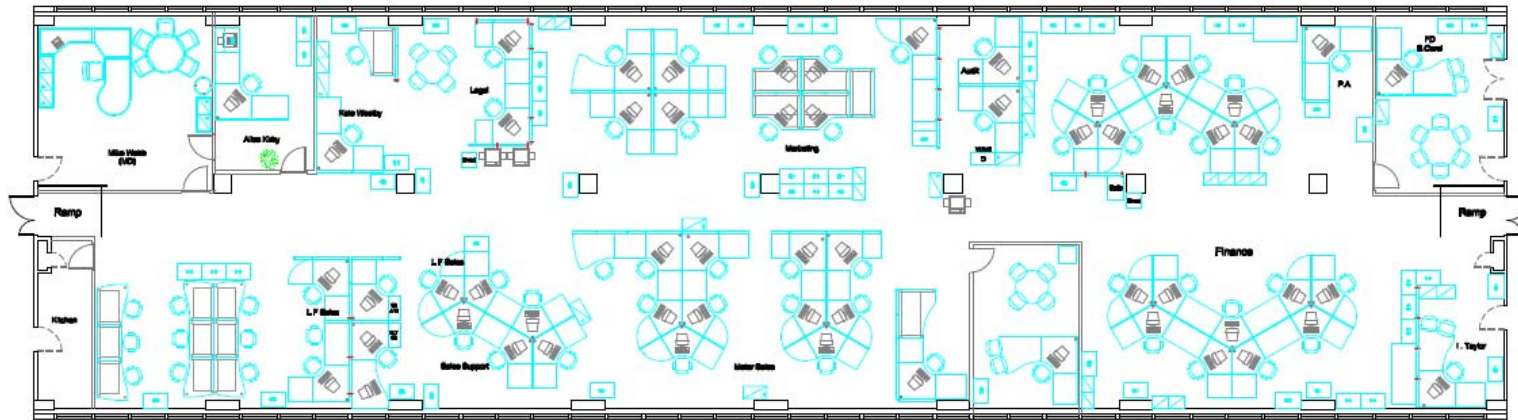




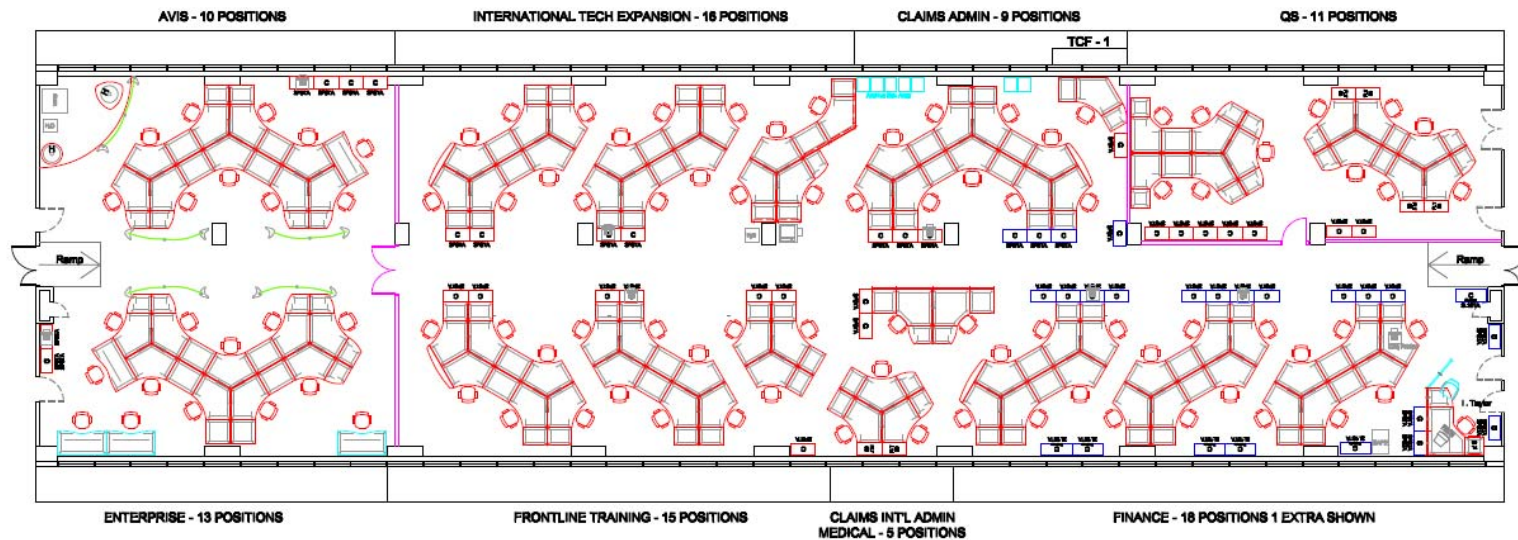


Would you like to save some space?





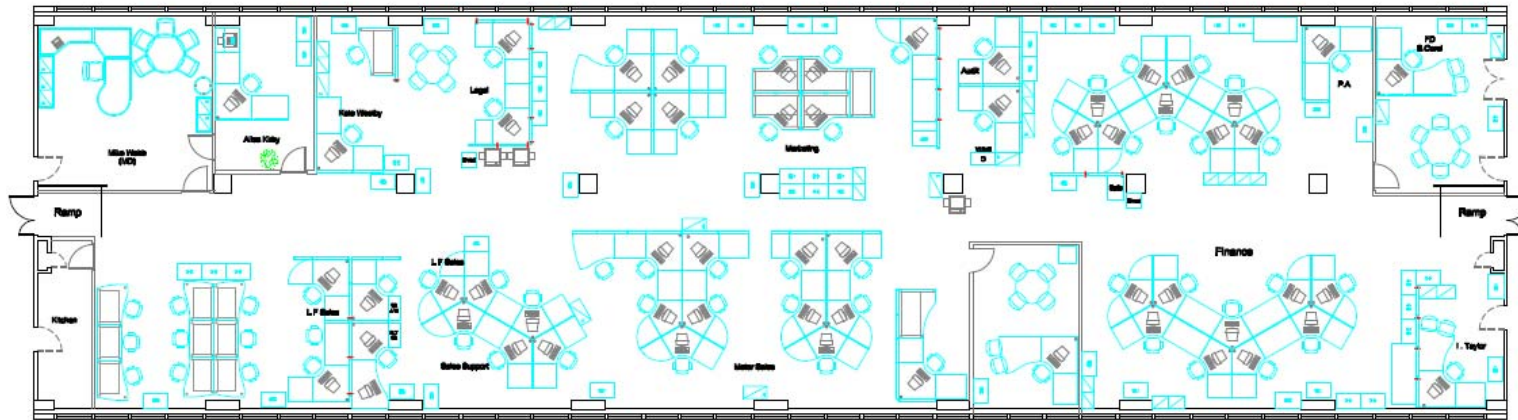
69
people



97
people

40%
more

Planning can be even more compact



69
people

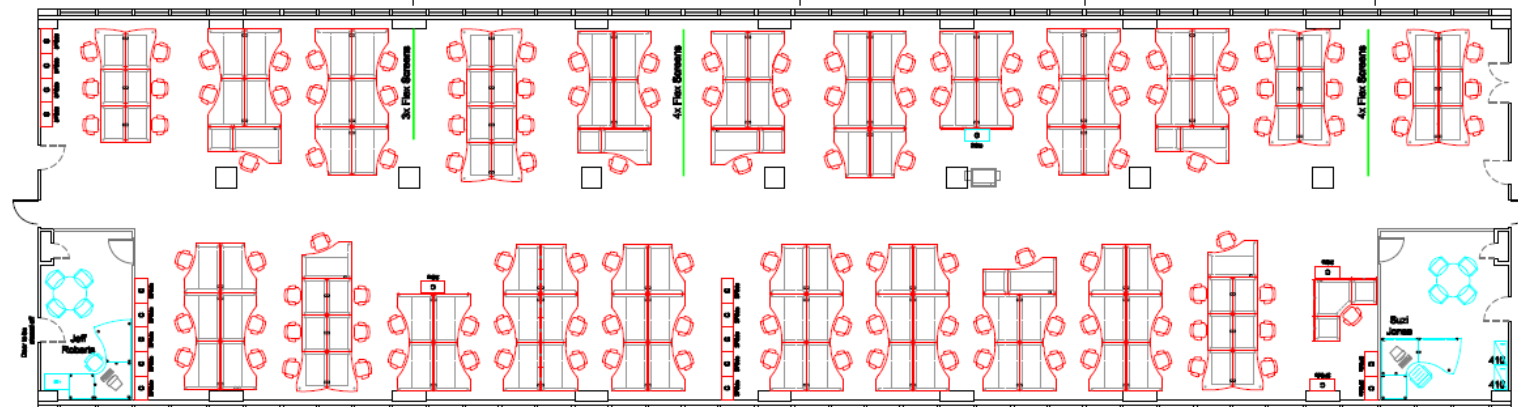
BMW - 17

UK - 16

PAG - 16

DC - 16

Int Tech - 6



131
people

90%
more

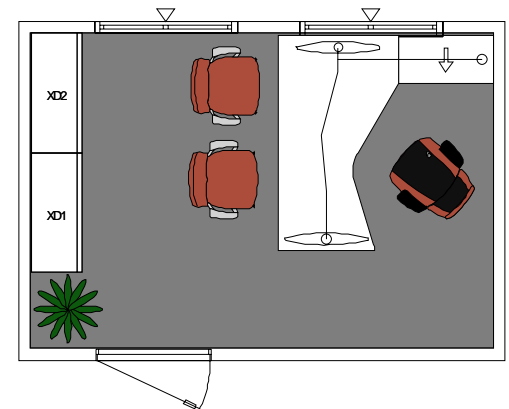
Support - 29 Staff including BMW & Tech Coordinators

Support - 30 Staff

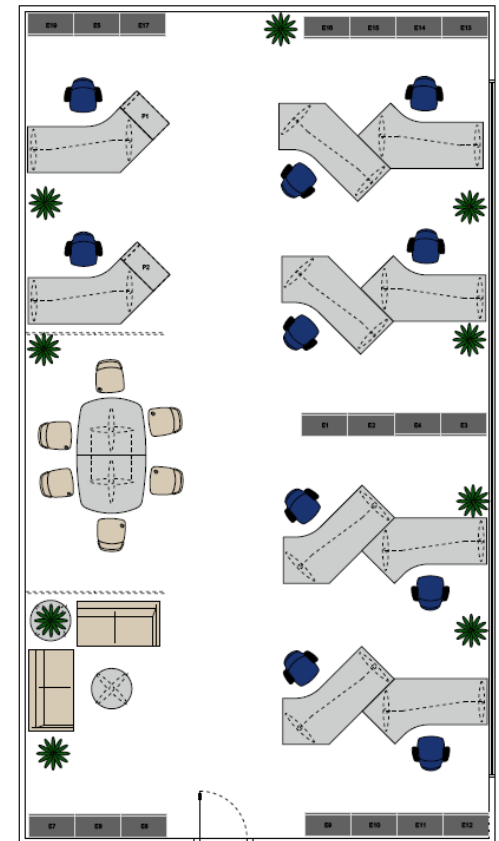
PA

Decide, how spacious your business
allows you to sit

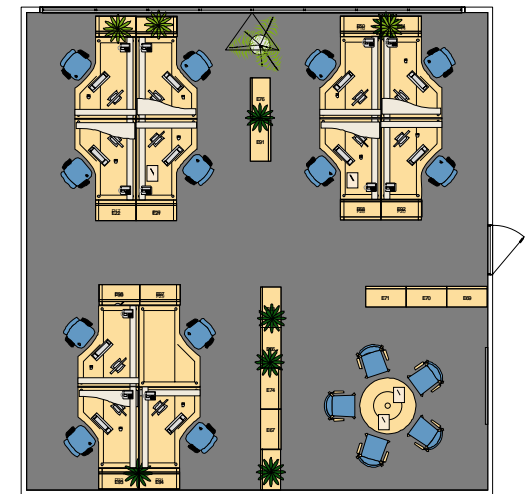
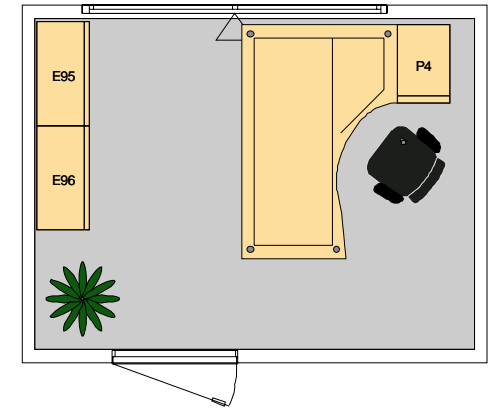
Example of 12 sq.m. per one person



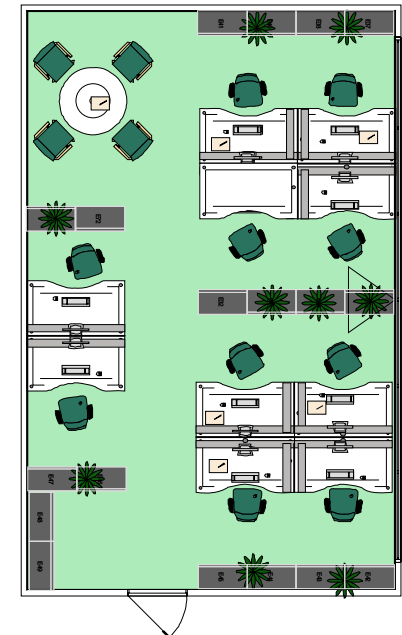
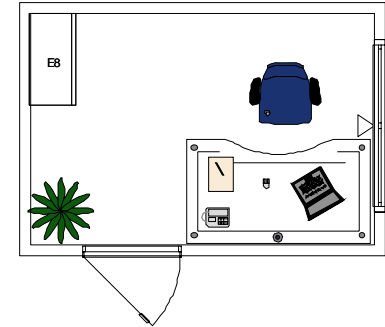
Example of 10 sq.m. per one person



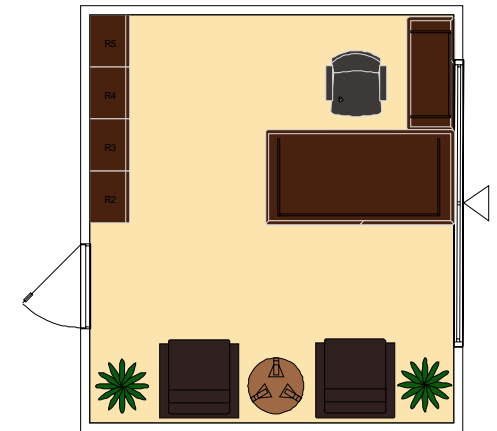
Example of 8 sq.m. per one person



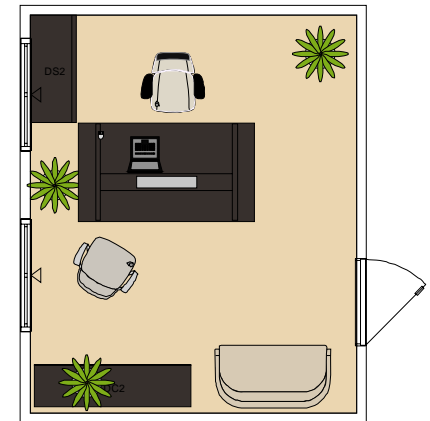
Example of 6 sq.m. per one person



Example of room 18 sq.m. per one person



Example of room 14 sq.m. per one person

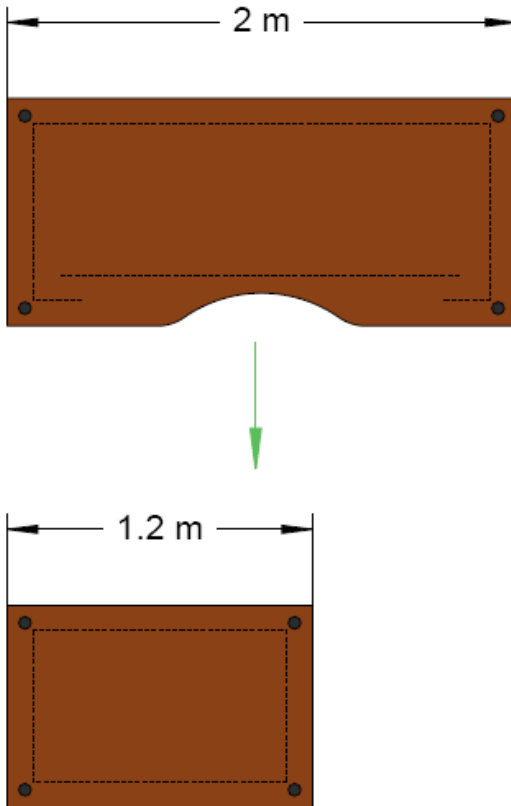


Rooms redistribution between departments

1. Бухгалтерия - 9 чел.
2. Юридическая служба - 5 чел.
3. ДАУ - 4 чел.
4. Финансовый блок - 9 чел.
5. Производственный блок - 11 чел.
6. Руководители отдела безопасности - 2 чел.
7. Отдел безопасности - 2 чел.
8. Уборщицы - 3 чел.
9. Управление внутреннего контроля и аудита - 3 чел.
10. Отдел информационных технологий - 2 чел.
11. Водители - 10 чел.
12. мед. пункт
13. Директора по персоналу
14. Директор департамента системного анализа и административного управления.
15. Главного бухгалтера.



Change tables
to smaller sized



Use high cabinets
near walls



Cabinets with
table height



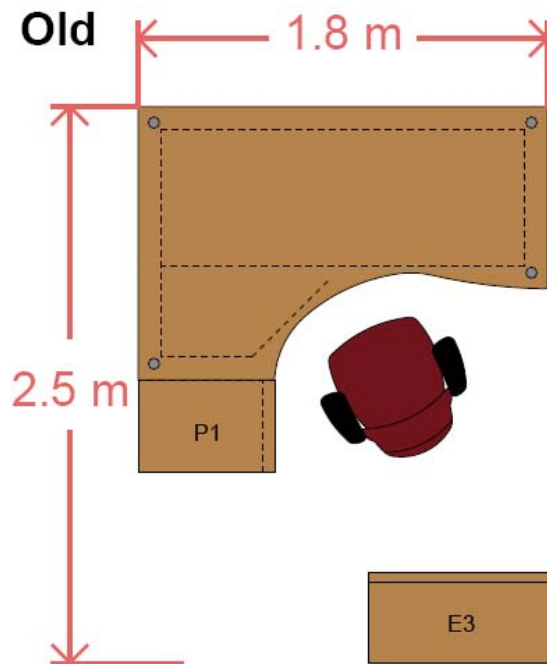
Combine meeting and training room



Think how many visitors chairs you need

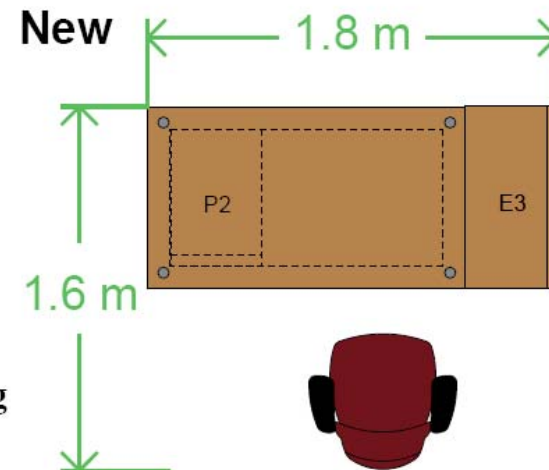


Calculations of saving the space



4.5 sq. m.

----->
Efficient planning



2.88 sq. m.

36%
Less

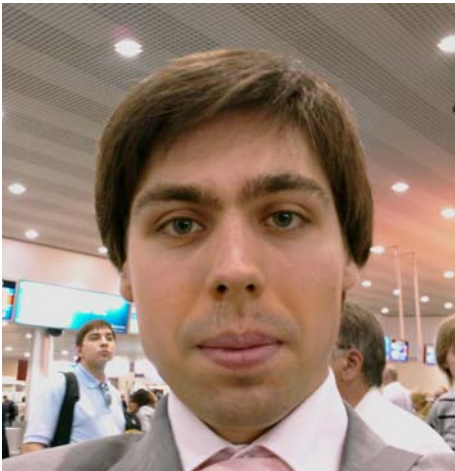
- **Refuse from your additional office (if any)**
- **Sublet some part of your current office**
- **Look for a smaller space**

*If you take another office, new furniture would be reasonable:

- Not to pay money for transporting old furniture
- Compensate employee's disappointment from moving
- Modern efficient workplaces save space
- Increase productivity of personnel



A family company,
established in 1942,
Kinnarps is one of Europe's
leading workspace interior
solution suppliers with a
presence in 35 countries.



Eugene Bakunov

Business development manager

+7 (495) 783 44 37

eugene.bakunov@kinnarps.ru

www.kinnarps.ru

Sadovaya-Samotechnaya 24/27